

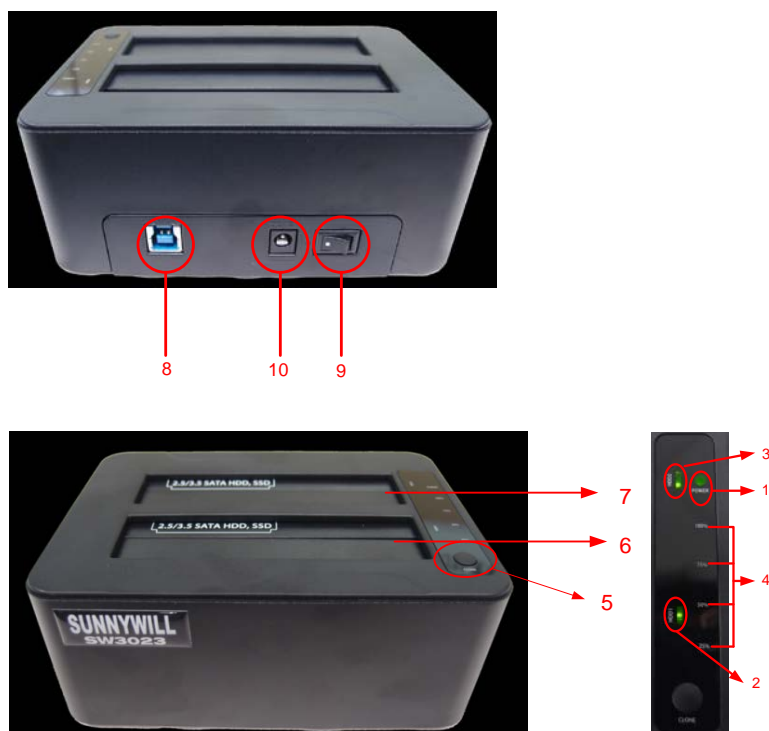
SW-3023 Manual

Introduction :

SW-3023 is a USB 3.0 to dual-SATA hard drive enclosure. It supports simultaneous access of two 2.5" or 3.5" SATA hard disk for both data read and data write. It is also backward compatible with USB 2.0 and USB 1.1. The maximum transfer speed of USB 3.0 can reach 5Gbps. The actual transfer speed of SW-3023 is depends on HDD/SSD.

SW-3023 supports **Flash Copy, Offline Clone, Online Clone, Security Erase**, which is able to copy data and system files from Source HDD to Target HDD **twice faster than other similar product**. SW-3023 provides high storage capacity, high data transfer rate, and best data protection.

Function Chart :



1. Power indicator.
2. Bay '1' HDD read/write access indicator.
3. Bay '2' HDD read/write access indicator.
4. Clone processing 25%, 50%, 75%, 100% indicator.
5. Clone button.
6. Bay '1'
7. Bay '2'
8. USB3.0 input
9. Power switch (ON/OFF)
10. DC input

Function:

- Complies with Gen2i/Gen2m of Serial ATA II Electrical Specification 2.6
- Supports SATA II Asynchronous Signal Recovery (Hot Plug) feature
- Complies with USB 3.0 Specification, USB Mass Storage Class, Bulk-Only Transport Specification
- Supports USB Super-Speed/High-Speed/Full-Speed Operation
- Supports USB2.0/USB3.0 power saving mode
- Support auto-spin down after idle for 5 mins
- Supports Dual LUN for USB2.0/USB3.0
- One Touch clone function.

- Easy to Install and Set-up
- Design for Win2000, WinXP, WinVista, Win7, Win8, MAC 9.2 or later version.

For more detail SPEC and Operation video please check our Web site at <http://www.sunnywill.com.tw>

Offline CLONE:

Warning: all the data in the TARGET HDD will be erased after the clone operation.

Please note the below conditions before clone:

- Bay '1' = SOURCE HDD,
- Bay '2' = TARGET HDD
- TARGET HDD's capacity **MUST** be larger than or equal to SOURCE HDD, otherwise the CLONE cannot be started.
- Before CLONE function starts, make sure the information in **TARGET** HDD is not important; once CLONE started, all information from the SOURCE HDD will be **covered into TARGET HDD**..
- Once the docking is connected to USB interface, the offline Clone will be invalid. Clone can only process via software "CloneDrive"

- Insert source HDD to Bay '1'; target HDD to Bay '2', and then turn on the power
- Once the Bays indicators are on, that means SW-3023 is ready for clone.
- Press and hold the clone button for 3 seconds until the indicator light is blinking, press the button once more for Clone confirmation **while all LEDs are still blinking blue**. Offline clone is starting to process and 25% light will start blinking alone to show its progress.



- d、 Clone progress indicator flashes and shows the progress (25%, 50%, 75%, 100%).
- e、 Once clone is finished, all progress indicators will light up.
- f、 Turn off power and take out the HDD carefully

- g、 Please note that after the clone operation, if the target and the source HDD is connected to PC at the same time, only one HDD will be placed online. Because after the HDD clone, the partition ID of the 2 HDD is identical.

Online Clone

Warning: all the data in the TARGET HDD will be erased after the CloneDrive clone operation

Youtube

Transfer System from HDD to SSD

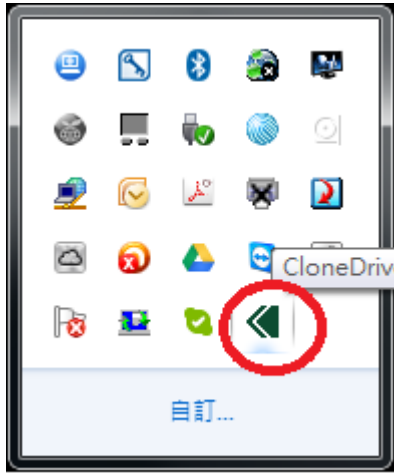
<https://www.youtube.com/watch?v=kV9QP9RMo2A>

SW3023 transfer notebook system to external SSD

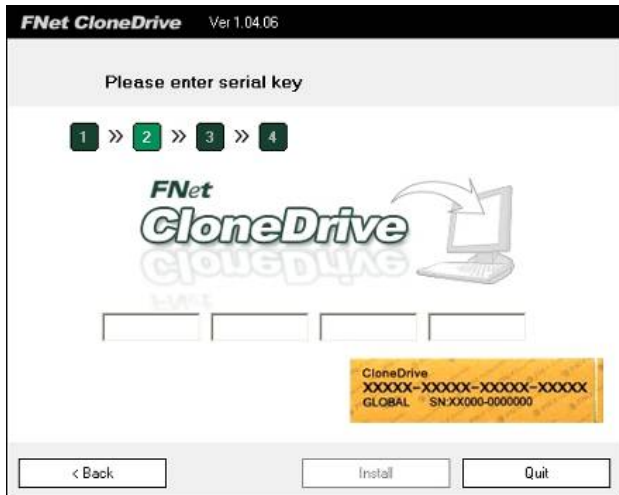
<https://www.youtube.com/watch?v=22Bg4xToP1g>

Software "CloneDrive" Installation

- a、 Please download the latest version "CloneDrive" from the download page of our official web site
<http://www.sunnywill.com.tw/index.php/download>
- b、 Please use the "WinRAR" to uncompress the download file and run the "CloneDrivePlus_Setup.exe" to install the CloneDrivePlus, you can get the winrar from the official download web site at
<http://www.rarlab.com/download.htm>
- c、 Please follow the instruction to complete the software installation
- d、 After the "CloneDrive" is installed, you can find the icon in the right-down corner of win7 task bar. Please double click the icon.



e. For the first time installation, you will need to fill in the S/N # accordingly (you can find the S/N# on the license sticker)

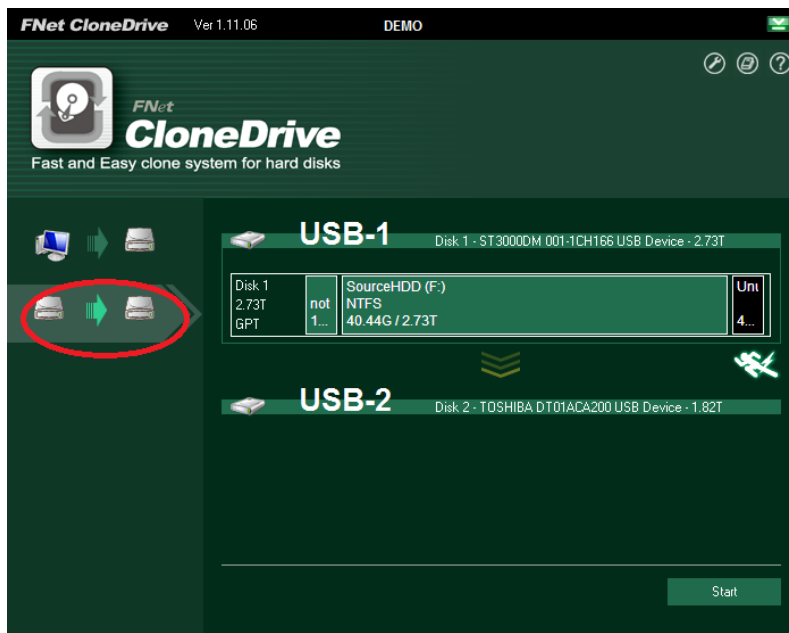


f. Please insert Source HDD and Target HDD well to the docking, connect SW-3023 to PC via USB cable. Turn on the power,

g、 The “CloneDrive” will show the HDD info of each bay.



h、 User can choose to “clone the external Disk”, which means the HDD in bay 1 will be the source HDD, and HDD in bay2 are the target HDD.



i、 User can choose to “Clone system disk to external disk”, which means the system disk inside the PC would be the source HDD, and **all the HDD in bay 1, 2 will be the target HDD.**

Warning: all the data in the TARGET HDD will be erased after the CloneDrive clone operation. Please make sure the data in TARGET HDD is backedup.



j、 Just click the “Start” on the right-down side of the program. Or just push the button on the docking station twice to start the operation.

Note1: With the CloneDrive, as long as the content in the source HDD is smaller than the target HDD, the clone operation could be operated. The software will resize the partition if the target HDD is smaller than the source HDD.

Note2: With the CloneDrive, the empty space will not be copy to save the operation time.

FlashCopy Operation

The flash copy is the unique advance technology from Sunnywill Tech. Co.. User can enjoy twice fast transfer speed than other vendor USB3.0 device while copy data between HDDs on the 2 bay docking even your PC only have USB 2.0.

You can see the video demo on our web site at

<http://www.sunnywill.com.tw/index.php/en/product/2-bay-sata-docking-2>

a、 Please download the latest version “FlashCopy” from the download page of our official web site

<http://www.sunnywill.com.tw/index.php/en/download>



b、 Please use the “WinRAR” to uncompress the download file and run the “FlashCopy_Setup.exe” to install the “FlashCopy”, you can get the winrar from the official download web site at <http://www.rarlab.com/download.htm>

c、 Please follow the instruction to complete the software installation

d、 Please insert Source HDD and Target HDD well to the docking, connect SW-3023 to PC via USB cable. Turn on the power. You can find the FlashCopy icon on your desktop. Then double click the FlashCopy Icon to

start the program.



e、 For the first time install, you will need to fill in the S/N # accordingly (you can find the S/N# on the license sticker)

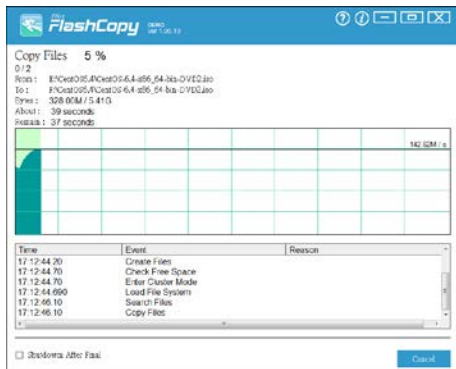


f、 After the program start, user can see content in bay1 and bay2 HDD, select the folder to be copied and draw the folder from the source HDD to the destination HDD.

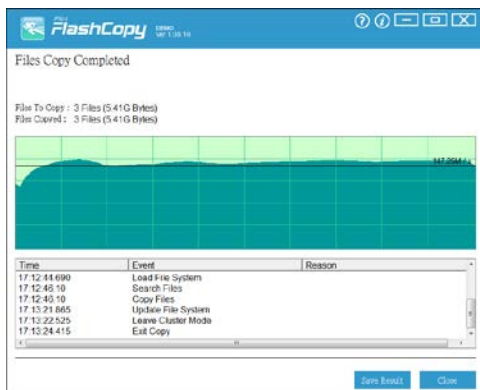




g、 After finishing the file selection, press the start button to activate the FlashCopy function.



h、 The process window pop up and detail copy information is showed on the window..



i、 After the FlashCopy finish operation the report windows shows above.

DiskErase Operation

Warning: Once the data is erased, there is no way to bring it back!!!!!!

The DiskErase is the software by which User can securely wipe all the data in hard disk drives. DiskErase provide 18 different standard algorithms (listed below) to wipe out the data in HDD. Once the data is wiped out there is no way to bring it back.

1. One Pass Zeros (1 pass).
2. One Pass Random (1 Pass)
3. US DoD 5220-22.M (3 Pass)
4. US DoD 5220.22-M (ECE) (7 Pass)
5. Canadian OPS-II
6. German VSITR
7. Russian GOST p50739-95
8. US Army AR380-19
9. US Air Force 5020
10. HMG IS5 (Baseline)
11. HMG IS5 (Enhanced)
12. Navso P-5329-26 (RL)
13. Navso P-5329-26 (MFM)
14. NCSC-TG-025
15. NSA 130-2
16. Bruce Schneier
17. Gutmann (35 times)
18. Schneier's 7 pass (7 times)

a. Please download the latest version "DiskErase" from the download page of our official web site

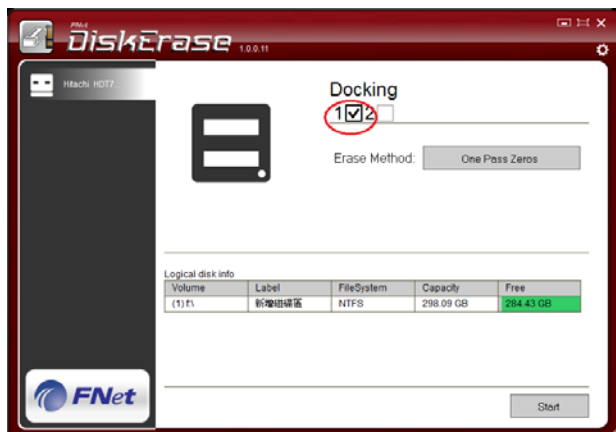
<http://www.sunnywill.com.tw/index.php/en/download>

b、 Please use the "WinRAR" to uncompress the download file and run the "Setup.exe" to install the "DiskErase", you can get the winrar from the official download web site at <http://www.rarlab.com/download.htm>

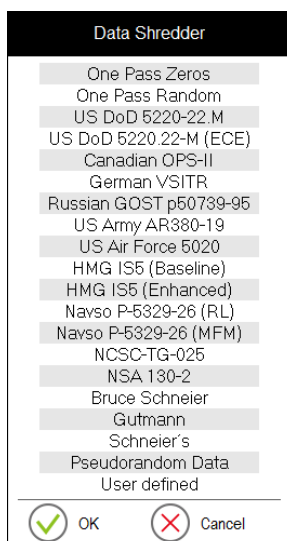
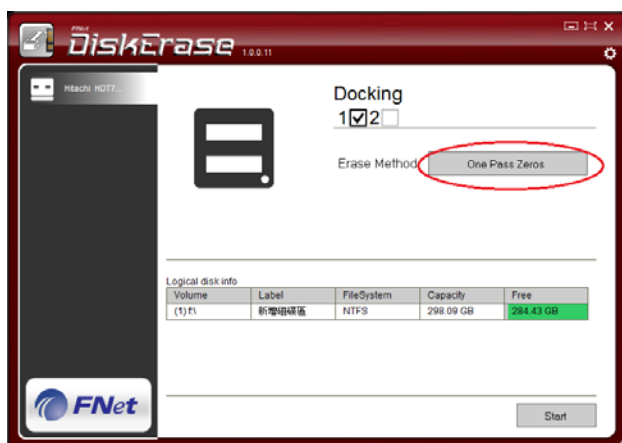
c、 Please follow the instruction to complete the software installation

d. Please insert the HDD to be erased to the docking, connect SW-3023 to PC via USB cable. Turn on the power. You can find the DiskErase icon on your desktop. Double click the DiskErase Icon to start the program.

e. Choose the HDD on docking to be erased.



f. Choose the algorithm to be used for data wipe out.



g. Click the "Start" icon to start the data wipe out operation.

h. Please enter the verification code to be sure you want to start the data erase.

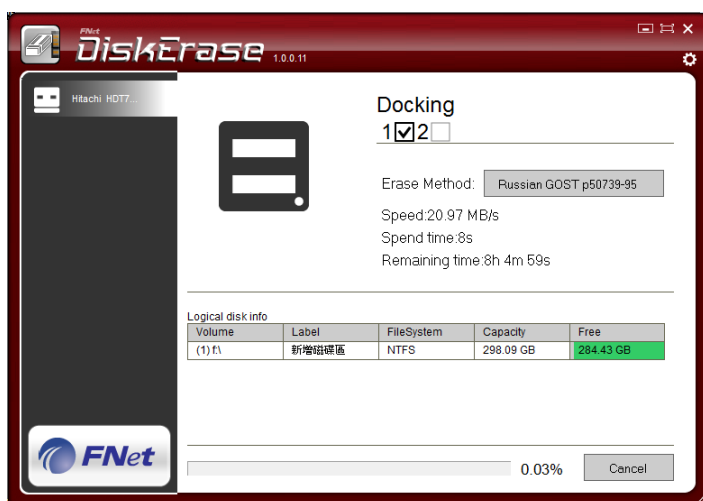
Warning: Once the data is erased, there is no way to bring it back!!!!!!

Please enter the verification code

6579

OK Cancel

i. The data erase status is show on the screen



The data erase time will depend on the chosen algorithm and the HDD speed.