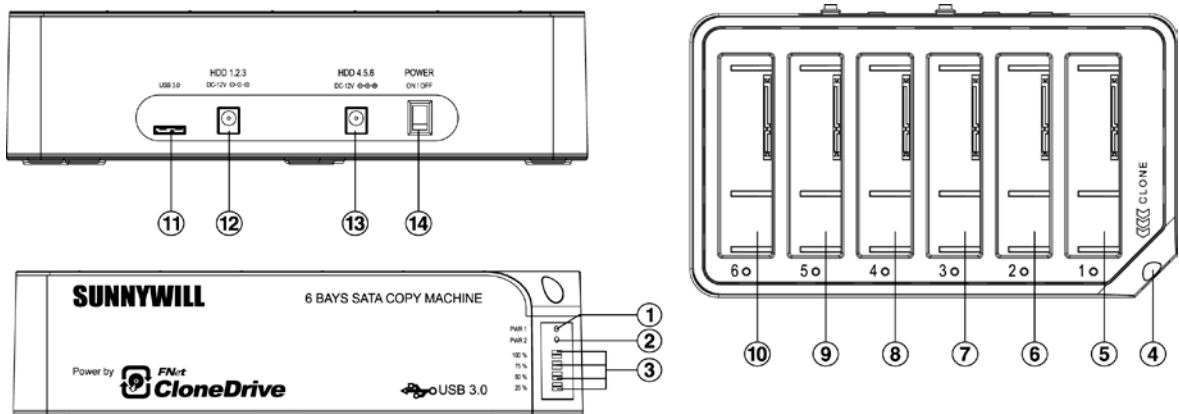


SWC-2013 Manual

SWC-2013 is a USB 3.0 to 6 bay SATA hard drive docking station. It supports simultaneous access of six 2.5" or 3.5" SATA hard disk for both data read and data write. It is also backward compatible with USB 2.0 and USB 1.1. The maximum transfer speed of USB 3.0 can reach 5Gbps. The actual transfer speed of SWC-2013 is depends on HDD/SSD.

SWC-2013 supports Flash Copy, Offline Clone, Offline Compare, Online Clone, which is able to copy data and system files from Source HDD to Target HDD completely. SWC-2013 provides high storage capacity, high data transfer rate, and best data protection.

Function Chart :



- 1、 Power indicator 1
- 2、 Power indicator 2
- 3、 Clone/Compare processing % indicator
- 4、 Clone/Compare button
- 5、 Bay '1'
- 6、 Bay '2'
- 7、 Bay '3'
- 8、 Bay '4'
- 9、 Bay '5'
- 10、 Bay '6'
- 11、 USB3.0 input
- 12、 DC input
- 13、 DC input
- 14、 Power switch (ON/OFF)

Function:

- Complies with Gen2i/Gen2m of Serial ATA II Electrical Specification 2.6
- Supports SATA II Asynchronous Signal Recovery (Hot Plug) feature
- Complies with USB 3.0 Specification, USB Mass Storage Class, Bulk-Only Transport Specification
- Supports USB Super-Speed/High-Speed/Full-Speed Operation
- Supports USB2.0/USB3.0 power saving mode
- Supports Multi LUN for USB2.0/USB3.0
- One Touch clone/Compare function.
- Easy to Install and Set-up
- Design for Win2000, WinXP, WinVista, Win7, Win8, MAC 9.2 or later version.

For more detail SPEC and demo video please check our Web site at

<http://www.sunnywill.com.tw/index.php/product/6-bay-sata-docking>

Offline CLONE:

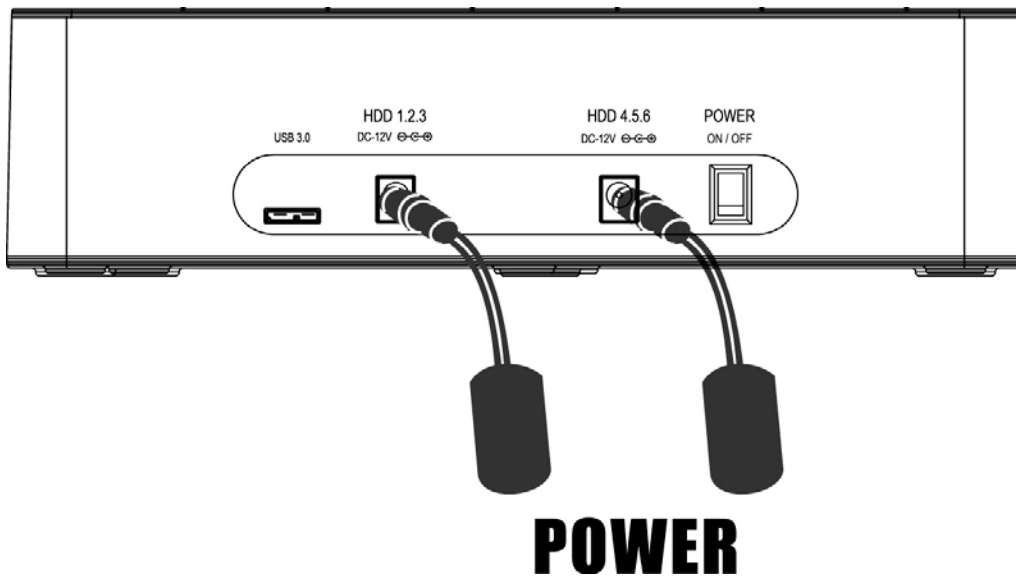
Warning: all the data in the TARGET HDD will be erased after the clone operation.

Please note the below conditions before clone:

- Bay '1' = SOURCE HDD,
- Bay '2, 3, 4, 5, 6' = TARGET HDD
- TARGET HDD's capacity **MUST** be larger than or equal to SOURCE HDD, otherwise the CLONE cannot be started.
- Before CLONE function starts, make sure the information in **TARGET** HDD is not important; once CLONE started, all information from the SOURCE HDD will be **covered** into **TARGET HDD**.
- Once the docking is connected to USB interface, the offline Clone will be invalid. Clone can only process via software "CloneDrive"

1. Offline clone

- a、 Insert source HDD to Bay '1'; target HDD to Bay '2, 3, 4, 5, 6', and then turn on the power



- b、 Once the Bays indicators are on, that means SWC-2013 is ready for clone.



- c、 Press and hold the clone button for 3 seconds until the indicator light is blinking in **blue**, press the button once more for Clone confirmation **while all LEDs are still blinking blue**. Offline clone is starting to process and **25% light will start blinking alone to show its progress**.



d、 Clone progress indicator flashes and shows the progress (25%, 50%, 75%, 100%).



e、 Once clone is finished, all progress indicators will light up in blue.



f、 Turn off power and take out the HDD carefully

Offline Compare:

Note: For Offline compare mode, the source drive must be placed in bay # 6. And please make sure the bay #1 is empty

- a、 Insert source HDD to Bay '6'; target HDD to Bay '2, 3, 4, 5', and then turn on the power
- b、 Once the Bays indicators are on, that means SWC-2013 is ready for compare operation.
- c、 Press and hold the clone button for 6 seconds until the indicator light is blinking in **Orange**, press the button once more for compare confirmation **while all LEDs are still blinking Orange**. Offline compare is starting to process and 25% light will start blinking alone to show its progress.
- d、 Compare progress indicator flashes and shows the progress (25%, 50%, 75%, 100%).
- e、 Once compare is finished, all progress indicators will light up in **Orange**.

If there is compare error, the R/W LED will turn RED to indicate which HDD is failed of the comparison.

User can download the slide file "[6Bay_CloneMachine_offline_operation.pdf](#)" from web site for more detail instruction.

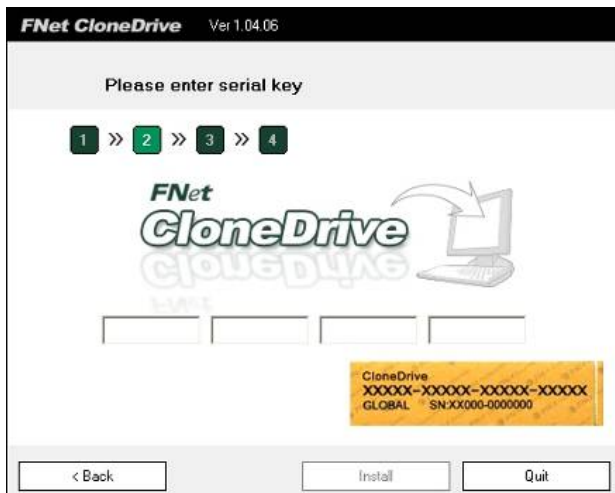
Online Clone:

Software "CloneDrive" Installation

- a、 Please download the latest version "CloneDrive" from the download page of our official web site <http://www.sunnywill.com.tw/index.php/download>
- b. Please use the "WinRAR" to uncompress the download file and run the "CloneDrivePlus_Setup.exe" to install the CloneDrivePlus, you can get the winrar from the official download web site at <http://www.rarlab.com/download.htm>
- c、 Please follow the instruction to complete the software installation
- d、 After the "CloneDrive" is installed, you can find the icon in the right-down corner of win7 task bar. Please double click the icon.

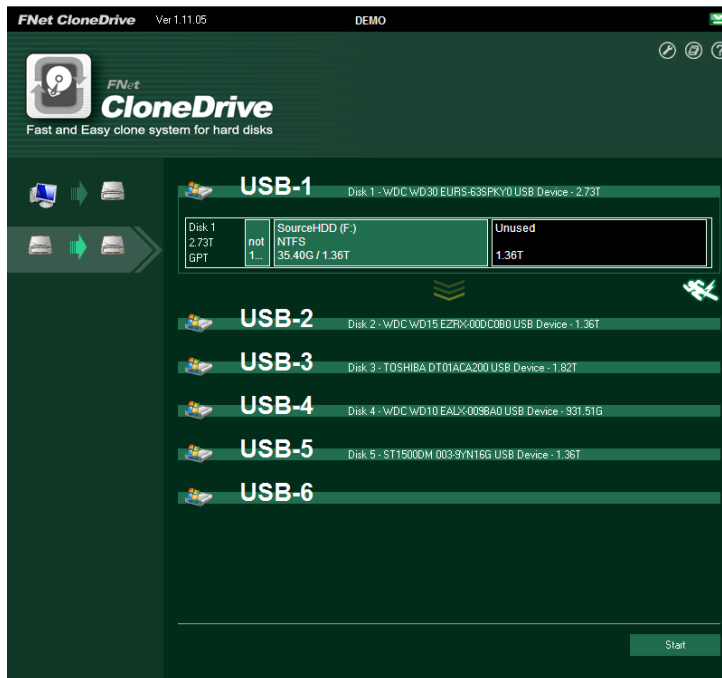


- e、 For the first time installation, you will need to fill in the S/N # accordingly (you can find the S/N# on the license sticker)

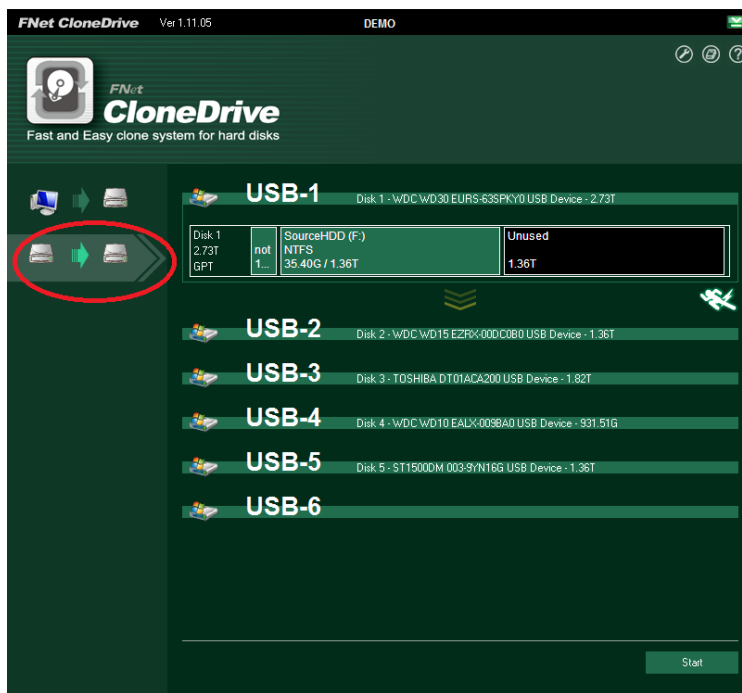


- f、 Please insert Source HDD and Target HDD well to the docking, connect SW-3022 to PC via USB cable. Turn on the power,

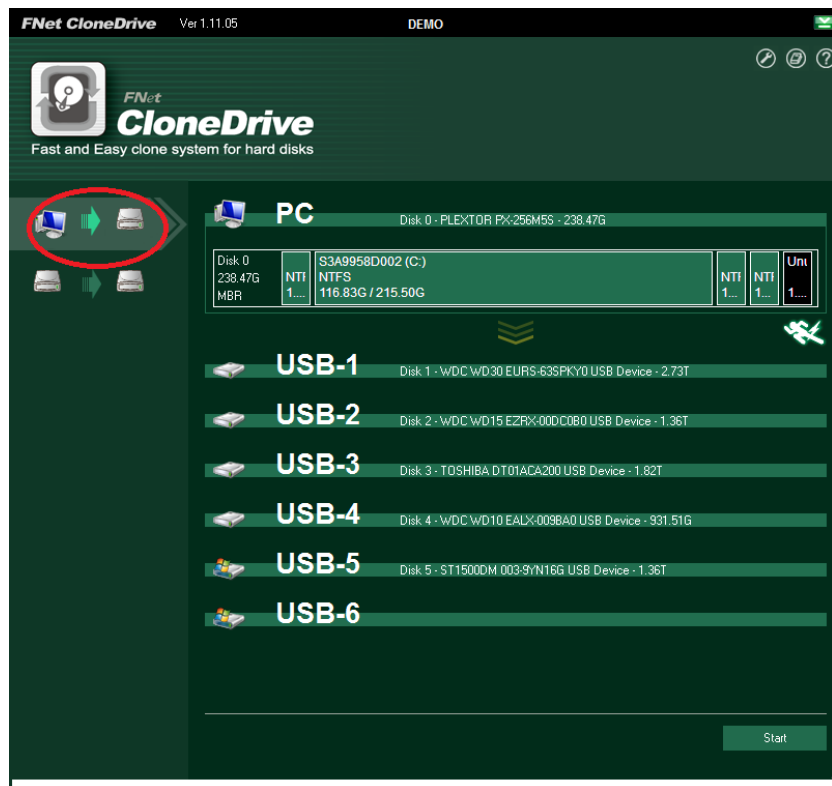
g、 The “CloneDrive” will show the HDD info of each bay.



h、 User can choose to “clone the external Disk”, which means the HDD in bay 1 will be the source HDD, and all the HDD in other bay are the target HDD.



i. User can choose to “Clone system disk to external disk”, which means the system disk inside the PC would be the source HDD, and all the HDD in bay 1~6 will be the target HDD.



j. Just click the “Start” on the right-down side of the program. Or just push the button on the docking station twice to start the operation.

Note1: With the CloneDrive, as long as the content in the source HDD is smaller than the target HDD, the clone operation could be operated. The software will resize the partition if the target HDD is smaller than the source HDD.

Note2: With the CloneDrive, the empty space will not be copy to save the operation time.

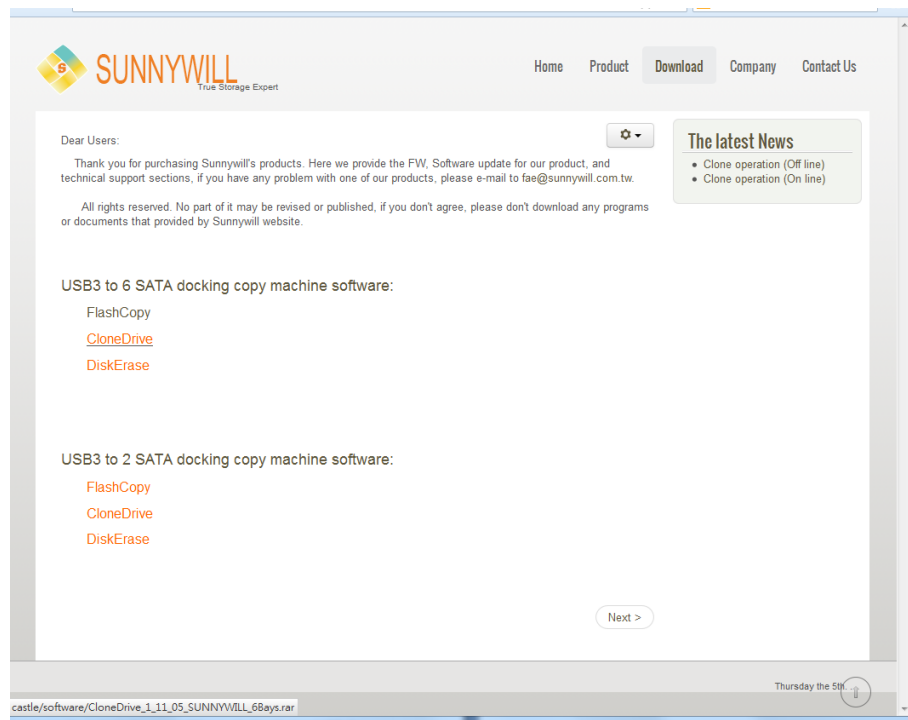
FlashCopy operation:

The flash copy is the unique advance technology from Sunnywill Tech. Co. User can enjoy twice fast transfer speed while copy data between HDDs plugged in the 6bay SATA docking station.

You can see the video demo on our web site at

<http://www.sunnywill.com.tw/index.php/product/6-bay-sata-docking>

a、 Please download the latest version “FlashCopy” from the download page of our official web site <http://www.sunnywill.com.tw/index.php/download>



b、 Please use the “WinRAR” to uncompress the download file and run the “FlashCopy_Setup.exe” to install the “FlashCopy”, you can get the winrar from the official download web site at <http://www.rarlab.com/download.htm>

c、 Please follow the instruction to complete the software installation

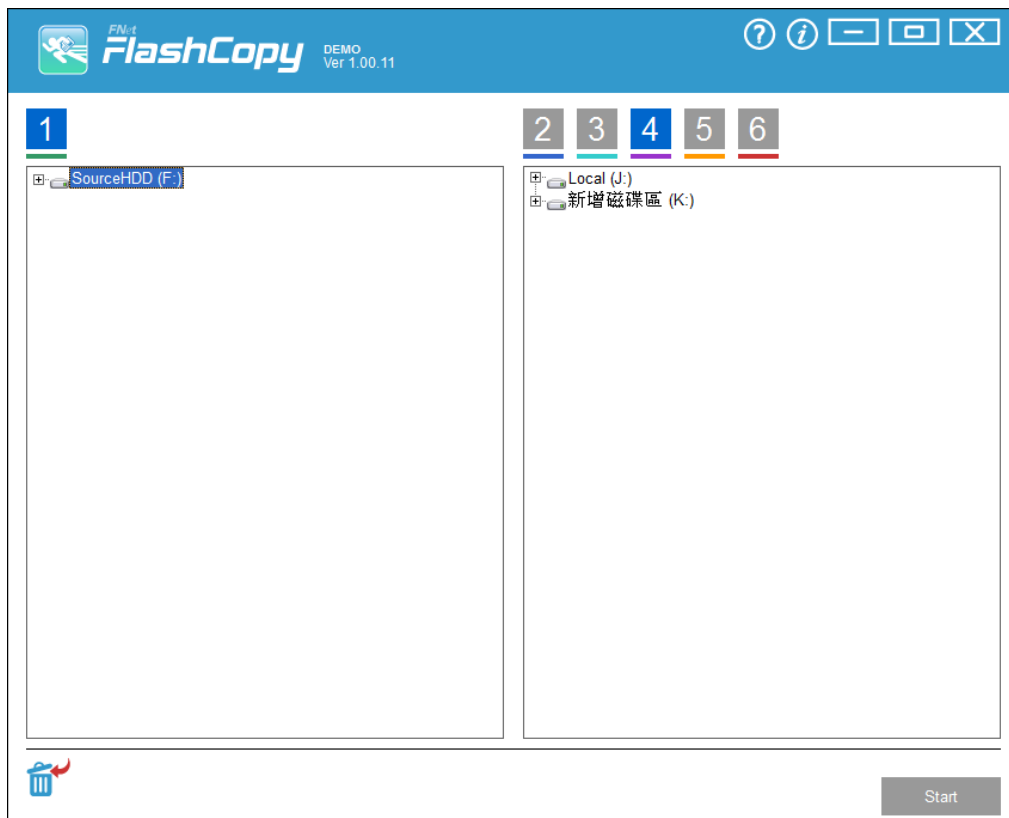
d、 After the “FlashCopy” is installed, you can find the flashCopy icon on the desktop table, double click the icon to start the program.



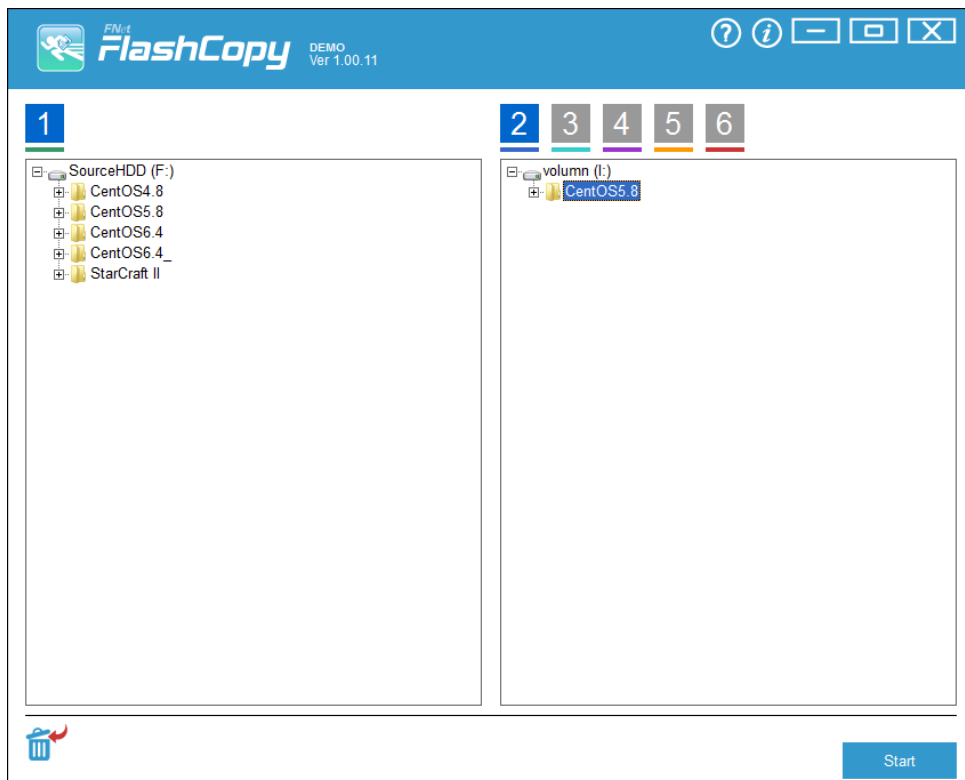
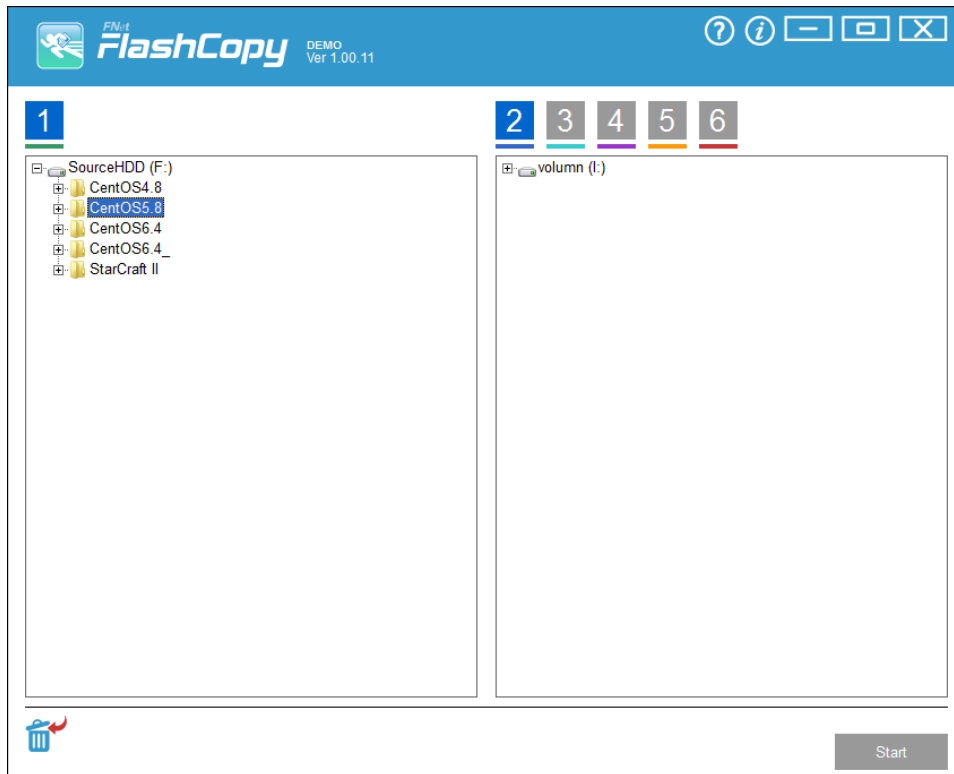
e、 For the first time install, you will need to fill in the S/N # accordingly (you can find the S/N# on the license sticker)



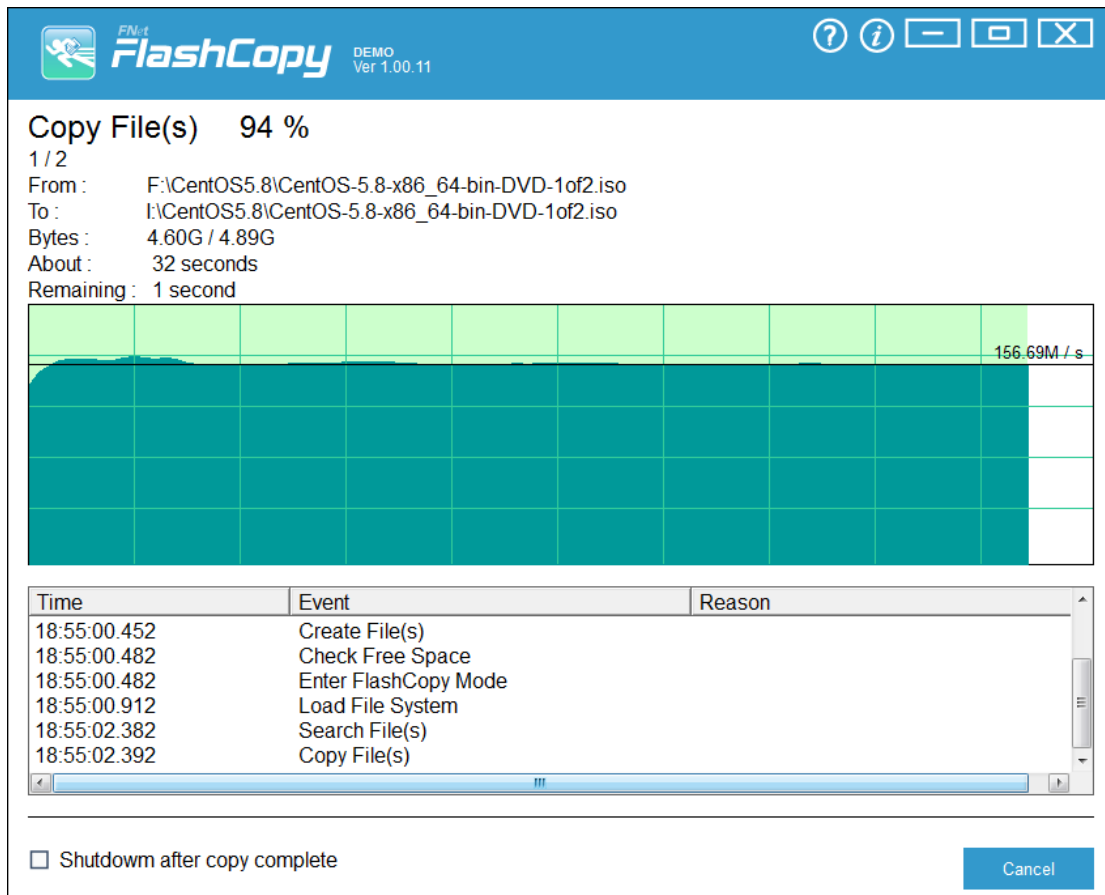
f、 After the filling the S/N, the “FlashCopy” start to show the HDD info in each bay.



g. Select the file to be copied and drag to the target HDD (The HDD in bay #2 for this case)



h. Press start button in the right down side of the program to start the operation



i. FlashCopy will save you wait time for copying the data, with FlashCopy, you can easily manage the data in your HDD.